



Delia Patricia Lowe

October 25, 1938 - December 8, 2015

Delia Patricia "Pat" (Bollig) Lowe age 77 formerly of Chanute, died Tuesday, December 8, 2015 at Good Samaritans Society in Parsons, KS. Pat was born on October 25, 1938 in Earleton, KS the seventh child of John Edward and Sarah Albina (Herrman) Bollig.

Pat was a graduate of Chanute High School in 1956. On September 22, 1972, she married Leland B. Lowe of Chanute, KS. He preceded her in death on November 26, 1994. They lived in Kansas City, MO and moved back to Chanute in 1982.

She was a devoted wife and mother. She had various occupations, active church member and volunteered at St. Patrick Catholic Church organizations. She enjoyed writing poetry, drawing artwork, playing cards, going dancing and spending time with family.

Pat is survived by:

Son:

Don Henshaw of Tulsa, OK

Daughters:

Teresa Henshaw of Kansas City, MO

Vicky Shininger of Greenfield, IN
Tammy Lowe of Chanute, KS

Sisters:

Betty Ward of Lancaster, CA
Doris Sander of Wichita, KS
Judy Riley of Chanute, KS
Joan Gill of Chanute, KS

Step Daughters:

Sylvia Hines of Girard, KS
Kay Lowe of Olathe, KS
Carla Brewer of Wilson, OK
Karen Sullivan of Cape Fair, MO

9 Grandchildren, 9 Great Grandchildren, over 38 nieces and nephews and
over 80 great nieces and nephews,

Numerous step grandchildren and step great grandchildren

Pat was preceded in death by her parents, husband Leland, 2 brothers Tony
Bollig and Robert Bollig, 3 sisters Marie Kirkpatrick, Jane Nottingham and
Linda Miller.

Rosary will be recited on Monday December 14, 2015 at 6:00 PM at St.
Patrick Catholic Church in Chanute. The family will receive friends following
the Rosary. Mass of Christian Burial will be at 10:00 AM on Tuesday,
December 15, 2015 at St. Patrick Church. Burial will follow at St. Patrick
Catholic Cemetery. Online condolences may be left at: www.countryisdefh.com.

Memorials have been suggest to either the St. Patrick Catholic Church or the St. Patrick Catholic School and may be left with or mailed to the funeral home. Services have been entrusted to: Countryside Funeral Home 101 N. Highland, Chanute, KS 66720

Cemetery Details

St. Patrick's Catholic Cemetery - Chanute

926 W. 7th Street
Chanute, KS

Previous Events

Rosary

DEC 14. 6:00 PM (CT)

St. Patrick's Catholic Church - Chanute
424 S. Central
Chanute, KS

Service

DEC 15. 10:00 AM (CT)

St. Patrick's Catholic Church - Chanute
424 S. Central
Chanute, KS

Tribute Wall

TL

“ 3 files added to the tribute wall



Tammy Lowe - December 14, 2015 at 10:43 AM

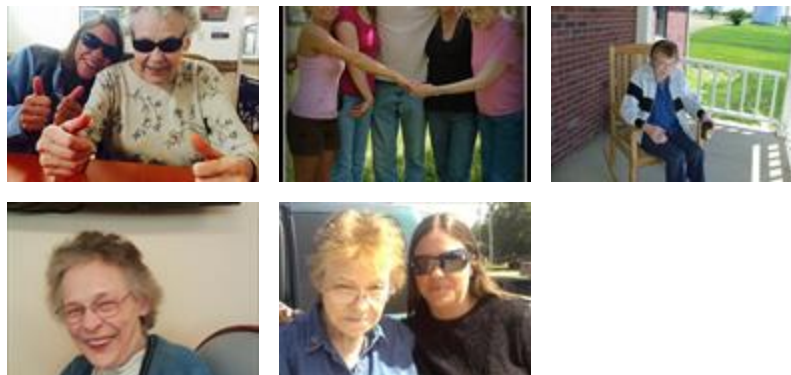


“ I am so very sorry for your loss. The Bible makes this comforting promise: "Jehovah is close to the brokenhearted, he saves those crushed in spirit." (Psalm 34:18) It also assures us: "Throw your burden on Jehovah, and he will sustain you." (Psalm 55:22) May these thoughts bring you a measure of comfort during this difficult time.

K - December 12, 2015 at 07:52 PM

TH

“ 6 files added to the tribute wall



Teresa Henshaw - December 12, 2015 at 08:58 AM

TH

“ Teresa Henshaw lit a candle in memory of Delia Patricia Lowe



Teresa Henshaw - December 12, 2015 at 08:56 AM



“ Judith Fisher lit a candle in memory of Delia Patricia Lowe



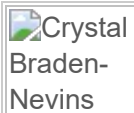
Judith Fisher - December 11, 2015 at 04:05 AM

DD

“ Donna Hanson Dye lit a candle in memory of Delia Patricia Lowe



Donna Hanson Dye - December 11, 2015 at 12:27 AM



“ Crystal Braden-Nevins lit a candle in memory of Delia Patricia Lowe



Crystal Braden-Nevins - December 11, 2015 at 12:12 AM

Crystal
Braden-
Nevins

“ 9 files added to the album *New Album Name*



Crystal Braden-Nevins - December 10, 2015 at 11:55 PM

SL

“ You will be missed more than you could possibly know grandma .
Love you so much ! See you in Heaven .

Sharon Leedy - December 10, 2015 at 10:01 PM

TL

“ 1 file added to the tribute wall



Tammy Lowe - December 10, 2015 at 07:52 PM

TL

“ Tammy Lowe lit a candle in memory of Delia
Patricia Lowe



Tammy Lowe - December 10, 2015 at 07:50 PM